

Buy-and-Bill Pathway Toolkit for SUBLOCADE[®] (buprenorphine extended-release)

**WARNING: RISK OF SERIOUS HARM OR DEATH WITH INTRAVENOUS ADMINISTRATION;
SUBLOCADE RISK EVALUATION AND MITIGATION STRATEGY**

- **Serious harm or death could result if administered intravenously. SUBLOCADE forms a solid mass upon contact with body fluids and may cause occlusion, local tissue damage, and thrombo-embolic events, including life threatening pulmonary emboli, if administered intravenously.**
- **Because of the risk of serious harm or death that could result from intravenous self-administration, SUBLOCADE is only available through a restricted program called the SUBLOCADE REMS Program. Healthcare settings and pharmacies that order and dispense SUBLOCADE must be certified in this program and comply with the REMS requirements.**

Please see accompanying full [Prescribing Information](#), including **BOXED WARNING**, and [Medication Guide](#) or go to SUBLOCADEHCP.com.
For REMS information visit www.SUBLOCADEREMS.com.

SUBLOCADE[®] (buprenorphine extended-release) ACQUISITION

NETWORK SPECIALTY DISTRIBUTORS

To acquire SUBLOCADE from a specialty distributor, an account must be set up with a network specialty distributor. A list of specialty distributors approved to distribute SUBLOCADE can be found at <https://www.INSUPPORT.com/specialty-product/resources-tools>. Additionally, the current list may be obtained at www.SUBLOCADEREMS.com or from the SUBLOCADE REMS Program at 1-866-258-3905.

SUBLOCADE NETWORK SPECIALTY DISTRIBUTORS		
Name	Phone	Fax
Besse Medical	1-800-543-2111	1-800-543-8695
CuraScript SD Specialty Distribution	1-877-900-9223	1-866-628-8942
Henry Schein	SUBLOCADE Onboarding Team: 1-888-229-3270 Option 3 General Support Phone: 1-800-772-4346	1-800-329-9109

To find the website for a network specialty distributor listed above, please visit www.INSUPPORT.com/specialty-distributors.

REMS Certification

A REMS (Risk Evaluation and Mitigation Strategy) is a strategy to manage known or potential risks associated with certain drugs and is required by the US Food and Drug Administration (FDA) to ensure that the benefits of a drug outweigh its risks.

More information about the SUBLOCADE REMS Program:

- Visit www.SUBLOCADEREMS.com to access the following materials:

SUBLOCADE REMS Program Healthcare Setting and Pharmacy Enrollment Form	SUBLOCADE REMS Program Dear Healthcare Provider Letter	Prescribing Information	Medication Guide
--	--	-------------------------	------------------

- Contact the SUBLOCADE REMS Program at 1-866-258-3905 for SUBLOCADE REMS materials and for additional information about the SUBLOCADE REMS Program
- Visit the REMS@FDA website at <https://www.accessdata.fda.gov/scripts/cder/rems/index.cfm>
- Call Indivior's Medical Information line at 1-877-782-6966

For **BOXED WARNING**, refer to first page. Please see accompanying full [Prescribing Information](#), including **BOXED WARNING**, and [Medication Guide](#) or go to SUBLOCADEREMS.com.

For REMS information visit www.SUBLOCADEREMS.com.

BUY-AND-BILL PATHWAY FOR SUBLOCADE® (buprenorphine extended-release)

What is the buy-and-bill process?

The buy-and-bill process allows a healthcare provider (HCP) office to purchase medication directly from a specialty distributor then bill the appropriate health insurance provider for the medication and administration fee.

STEP 1: Determine coverage

STEP 2: Establish an account

STEP 3: Order SUBLOCADE

STEP 4: Receive and store SUBLOCADE

STEP 5: Administer product

STEP 6: Submit claim

STEP 7: Payment

STEP 8: Copay assistance



Conduct a benefit investigation to determine the patient's coverage for SUBLOCADE. Some payers may require a prior authorization (PA) for SUBLOCADE.



Set up an account with a network specialty distributor. SUBLOCADE is available through a limited number of specialty distributors. Make sure that your distributor is authorized to provide SUBLOCADE and has it in stock.



Many specialty distributors offer online, email, and phone ordering.



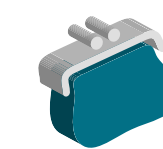
SUBLOCADE is a controlled substance with special storage, handling, and disposal requirements. Once the medication is received, store according to regulatory and labeling requirements.



Refer to Full Prescribing Information, including Instructions for Use.



Following administration of SUBLOCADE to the patient, submit a claim to the payer.



If the claim is approved, the payer should provide payment.



Submit the paid claim and explanation of benefits for processing of the patient's copay assistance, if eligible.

If you enroll in INSUPPORT®:

INSUPPORT can provide information about PA requirements and payer-specific PA forms, if appropriate. The HCP office must complete the forms.

INSUPPORT can provide contact information for network specialty distributors.

For a list of network specialty distributors, see the reverse page of this resource or go to www.INSUPPORT.com/specialty-distributors.

INSUPPORT can provide you with information on proper storage requirements based on the Prescribing Information for SUBLOCADE.*

INSUPPORT can provide billing and coding information.† Please see the SUBLOCADE Billing and Coding Guide for additional information.



INSUPPORT can enroll an eligible patient into the Copay Assistance Program for SUBLOCADE, if requested.‡ Please see the INSUPPORT® Copay Assistance Program Brochure for SUBLOCADE for more information.



Top Buy-and-Bill Considerations

Some health plans allow only buy-and-bill access for SUBLOCADE

Certain health insurance plans, such as fee-for-service Medicare, require HCPs to buy and bill SUBLOCADE. HCPs can consider the payer mix within their practice or facility and identify which plans require this access option.

Verify Health Insurance Benefits prior to administering SUBLOCADE to identify issues that can impact patient access

Conduct a complete verification of a patient's health insurance plan benefits to uncover key information needed to access SUBLOCADE. For example, a plan may require the HCP to request a PA and fill out a specific form before it will cover SUBLOCADE. It is helpful to confirm that a plan will support buy-and-bill access for SUBLOCADE under the patient's medical plan benefit prior to administering the drug to the patient. Patients and HCPs can enroll in INSUPPORT® to receive assistance with benefits investigation.

Designate a staff person to be a SUBLOCADE champion to improve accountability

Designating a staff person to perform a daily comparison of charge entries against an inventory control log helps to ensure SUBLOCADE is accurately accounted for each patient.

Review federal, state, and local rules about storing controlled substances

The Prescribing Information for SUBLOCADE describes the FDA requirements for storage, handling, and disposal of the medication. There are US Drug Enforcement Administration (DEA) requirements for storage of a controlled substance, and there may be additional regulations and requirements that must be followed. Visit <https://www.govinfo.gov/content/pkg/CFR-2011-title21-vol9/pdf/CFR-2011-title21-vol9-sec1301-75.pdf> to review information from the DEA for suggested security measures for HCPs who store controlled substances within their facilities.

Consider storing different dosages of SUBLOCADE separately

Some patients prescribed SUBLOCADE may need a dosage adjustment during treatment. Sorting SUBLOCADE by different dosage strengths and keeping stock organized may be helpful.

Coding requirements for SUBLOCADE and its injection procedure vary by payer

Certain health insurance plans, such as Medicaid, require HCPs to include the 11-digit National Drug Code on medical claims along with the drug-specific Q-code for SUBLOCADE. Plan-specific coding guidance can be obtained during a benefits investigation. For additional information, visit <https://www.INSUPPORT.com/specialty-product/resources-tools>, and review the Billing and Coding Guide for SUBLOCADE.

There are ways to be prepared before submitting a claim†

Contact your INSUPPORT® Patient Access Specialist (PAS) to review the Billing and Coding Guide for SUBLOCADE (this assistance does not relieve the HCP of the duty to ensure the accuracy of supplied information).

Managed care contracts are a critical part of appropriate reimbursement

When considering buy and bill, HCPs should understand reimbursement rates for SUBLOCADE from payers. Call each payer to discuss and/or review current contracts to understand how SUBLOCADE will be reimbursed.

INSUPPORT offers financial support for eligible commercially insured patients‡

Do not let a patient's financial concerns about the out-of-pocket costs of therapy prevent them from accessing care with SUBLOCADE. INSUPPORT offers a copay assistance program for SUBLOCADE that may assist eligible patients with copays for their SUBLOCADE injections. Restrictions apply. Contact INSUPPORT or your PAS for more information.

For **BOXED WARNING**, refer to first page. Please see accompanying full [Prescribing Information](#), including **BOXED WARNING**, and [Medication Guide](#) or go to SUBLOCADEHCP.com.

For REMS information visit www.SUBLOCADEREMS.com.

P-BAG-US-01228 EXPIRY December 2024

*There may be other storage requirements not addressed in the Prescribing Information. Please refer to state and federal regulations.

†HCPs are responsible for ensuring all information submitted on or with the claim is accurate, complete, and applicable to the claim being filed. Indivior makes no representations or warranties or guarantees of any kind relating to access, coverage, or reimbursement.

‡The INSUPPORT® Copay Assistance Program is valid ONLY for patients with private insurance who are prescribed SUBLOCADE for on-label use. Patients with government insurance are not eligible for the Copay Assistance Program, including, but not limited to, Medicare, Medicaid, Medigap, VA, DoD, TRICARE, CHAMPVA, or any other federally or state-funded government assisted program. Other restrictions apply. Visit INSUPPORT.com to view complete Terms & Conditions. Copay assistance to eligible patients may not be sufficient to cover the entire cost of copay.

For more information, call INSUPPORT®
at **844-INSPPRT** (844-467-7778) between 8:00 am and 8:00 pm ET.

Visit www.INSUPPORT.com.


For **BOXED WARNING**, refer to first page. Please see accompanying full [Prescribing Information](#), including **BOXED WARNING**, and [Medication Guide](#) or go to SUBLOCADEHCP.com.

For REMS information visit www.SUBLOCADEREMS.com

P-BAG-US-01228 EXPIRY December 2024

SUBLOCADE and INSUPPORT are registered trademarks of Indivior UK Limited.

© 2022 Indivior UK Limited | INDIVIOR is a registered trademark of Indivior UK Limited | All rights reserved.


Sublocade®
(buprenorphine extended-release)
injection for subcutaneous use ™
100mg•300mg