

# We can do this, **together.**

# \$0

You may be able to pay as little as  
**per injection**  
of SUBLOCADE<sup>®</sup>

Restrictions apply

## INSUPPORT<sup>®</sup> Copay Assistance Program for SUBLOCADE<sup>®</sup> (buprenorphine extended-release) injection, for subcutaneous use, CIII

Please see insert in pocket or visit [INSUPPORT.com](https://www.insupport.com)  
for full Terms and Conditions.

### What is the most important information I should know about SUBLOCADE?

**Because of the serious risk of potential harm or death from self-injecting SUBLOCADE into a vein (intravenously), it is only available through a restricted program called the SUBLOCADE REMS Program**

- **SUBLOCADE is not available in retail pharmacies.**
- **Your SUBLOCADE injection will only be given to you by a certified healthcare provider.**

See full [Prescribing Information](#), including **BOXED WARNING**, and [Medication Guide](#) or go to [SUBLOCADE.com](https://www.sublocade.com).

**Sublocade<sup>®</sup>**  
*(buprenorphine extended-release)  
injection for subcutaneous use*   
100mg-300mg

# Let's take treatment day by day.



Some patients may pay as little as  
**\$0 per injection of  
SUBLOCADE® (buprenorphine extended-release)**  
for the first 2 injections in each calendar year.<sup>b,c</sup>

The program can help with  
**14 injections  
per calendar year.**



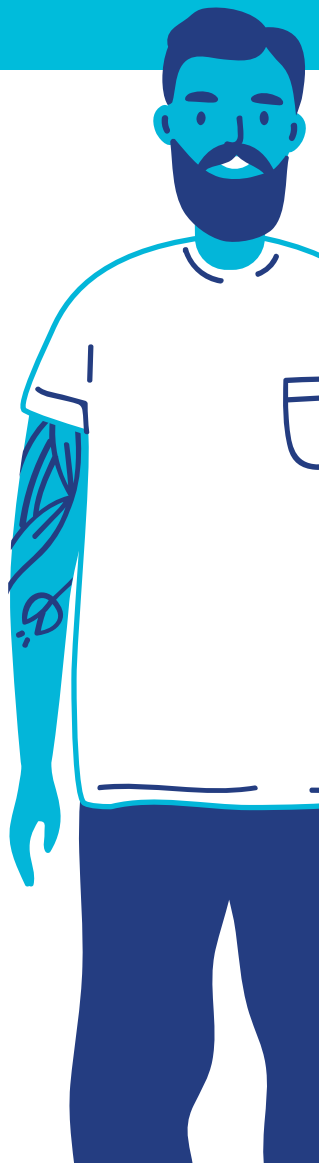
**The program benefit covers  
costs for SUBLOCADE only.**

For example, your office visit may not be covered, but your medicine would be. Ask INSUPPORT to help you understand what your insurance may pay for and your responsibilities.

**Once enrolled in the program,  
you will get a copay member ID card.**



Just show this to your healthcare provider or pharmacy that is administering your medication.










INSUPPORT may help provide information on a patient's insurance coverage for SUBLOCADE, if requested.

For **BOXED WARNING**, refer to first page.  
Please see full Prescribing Information, including **BOXED WARNING**,  
and Medication Guide or go to SUBLOCADE.com.

**INSUPPORT® wants to help  
you or your loved ones.**



## To receive INSUPPORT, patients need to:

-  Be at least 18 years old
-  Live in the US or a US territory
-  Live in a state that allows copay assistance
-  Have private health insurance not funded by the government
-  Have private health insurance that allows copay assistance and provides coverage for some portion of the cost of SUBLOCADE injection
-  **Be prescribed SUBLOCADE by a healthcare provider**
-  There may be additional requirements, and your eligibility will be determined based on such requirements

But even if you or your loved ones don't meet these requirements, INSUPPORT may be able to get you help from other sources.

## Start now.



Visit: [INSUPPORT.com/savings](https://www.insupport.com/savings) to enroll.  
Or call 844-INSPPRT (844-467-7778),

8 AM to 8 PM ET Monday through Friday.

- **Your healthcare provider may also get you started.**  
They will need the [Patient Enrollment Form](#)
- Providers – Submit both completed forms at [INSUPPORTportal.com](https://www.insupportportal.com), or fax all pages to 844-814-0669.



INSUPPORT Resources and Tools for HCPs  
[INSUPPORT.com/resources](https://www.insupport.com/resources)

For **BOXED WARNING**, refer to first page.  
Please see full [Prescribing Information](#), including **BOXED WARNING**,  
and [Medication Guide](#) or go to [SUBLOCADE.com](https://www.sublocaide.com).

# INSUPPORT® knows you are working hard. That's why we make INSUPPORT easy.



Call **844-INSPPRT** (844-467-7778),  
8 AM to 8 PM ET  
Monday through Friday.

- <sup>a</sup> For the first 2 injections per calendar year. Additional out-of-pocket copay support may be available for other injections for the rest of the calendar year.
- <sup>b</sup> The INSUPPORT Copay Assistance Program is valid ONLY for patients with private insurance who are prescribed SUBLOCADE for on-label use. Patients with government insurance are not eligible for the Copay Assistance Program, including, but not limited to, Medicare, Medicaid, Medigap, VA, DoD, TRICARE, CHAMPVA, or any other federally or state-funded government-assisted program. Other restrictions apply. Visit [www.INSUPPORT.com](http://www.INSUPPORT.com) to view complete Terms and Conditions.
- <sup>c</sup> The eligibility period for the Copay Assistance Program is based on calendar year (January through December). Yearly re-enrollment is no longer required for the Copay Assistance Program. Patients who are enrolled in copay can continue using the same copay card the following year of enrollment. Visit [www.INSUPPORT.com](http://www.INSUPPORT.com) to view complete Terms and Conditions.

For **BOXED WARNING**, refer to first page.

Please see full [Prescribing Information](#), including **BOXED WARNING**, and [Medication Guide](#) or go to [SUBLOCADE.com](http://SUBLOCADE.com).

For REMS information, visit [SUBLOCADEREMS.com](http://SUBLOCADEREMS.com).

P-BAG-US-01332

EXPIRY August 2025

For US audiences only

© 2023 Indivior UK Limited | INDIVIOR®, SUBLOCADE® and INSUPPORT® are registered trademarks of Indivior UK Limited. | ALL RIGHTS RESERVED.

**Sublocade**®  
(buprenorphine extended-release)  
injection for subcutaneous use Ⓢ  
100mg·300mg