

# INSUPPORT<sup>®</sup>

## FOR HEALTHCARE PROFESSIONALS AND THEIR OFFICES.

Dedicated to patient access



**WARNING: RISK OF SERIOUS HARM OR DEATH WITH INTRAVENOUS ADMINISTRATION; SUBLOCADE RISK EVALUATION AND MITIGATION STRATEGY**

- Serious harm or death could result if administered intravenously. SUBLOCADE forms a solid mass upon contact with body fluids and may cause occlusion, local tissue damage, and thrombo-embolic events, including life threatening pulmonary emboli, if administered intravenously.
- Because of the risk of serious harm or death that could result from intravenous self-administration, SUBLOCADE is only available through a restricted program called the SUBLOCADE REMS Program. Healthcare settings and pharmacies that order and dispense SUBLOCADE must be certified in this program and comply with the REMS requirements.

Please see accompanying full Prescribing Information, including **BOXED WARNING** and Medication Guide, or go to [SUBLOCADEHCP.COM](http://SUBLOCADEHCP.COM).

  
**Sublocade<sup>®</sup>**  
(buprenorphine extended-release)  
injection for subcutaneous use <sup>®</sup>  
100mg/300mg

## INSUPPORT PORTAL

- Submit the enrollment form electronically
- Capture digital patient authorization
- Submit a medical copay claim
- Enroll patient in the Copay Assistance Program

Visit [INSUPPORTportal.com](https://insupportportal.com) for more information



Scan the QR code below for  
the Patient Enrollment Form



<https://www.insupport.com/pdf/patient-enrollment-form-en.pdf>

***Sublocade***<sup>®</sup>  
(buprenorphine extended-release)  
injection for subcutaneous use <sup>®</sup>  
100mg•300mg

For **BOXED WARNING**, refer to first page. Please see  
accompanying full Prescribing Information, including  
**BOXED WARNING** and Medication Guide,  
or go to **SUBLOCADEHCP.COM**.

## INSUPPORT® CAN HELP



### COPAY ASSISTANCE<sup>a</sup>

Eligible patients may pay as little as \$0 per injection of SUBLOCADE® (buprenorphine extended-release) for the first 2 injections. Restrictions apply.

For more information, please visit

<https://www.insupport.com/specialty-product/copay>



### BENEFIT COVERAGE

Patients enrolled in INSUPPORT can receive an insurance benefit investigation of medical or pharmacy coverage for SUBLOCADE including which pharmacy is able to fill a prescription.<sup>b</sup>

### CARE MANAGER

We can assist in locating a SUBLOCADE treatment provider near your patient.



### PATIENT ACCESS SPECIALIST (PAS)

The PAS can provide information on the access and reimbursement process, including in-person support, explanation of patient insurance benefits and requirements, program offerings, and billing and drug coding information for Indivior products



## ADDITIONAL RESOURCES

<https://www.insupport.com/specialty-product/resources-tools>



### TRANSITION OF CARE

We can help patients who are transitioning to a new healthcare setting to receive treatment with SUBLOCADE.



### FIND A SUBLOCADE TREATMENT PROVIDER

INSUPPORT's Find a SUBLOCADE Treatment Provider (FASTP) includes information on how to locate a community provider.

### ADDITIONAL SITE OF CARE

Is a tool to help identify a facility or healthcare provider other than a prescribing physician's office as a flexible option for the administration of SUBLOCADE injections.

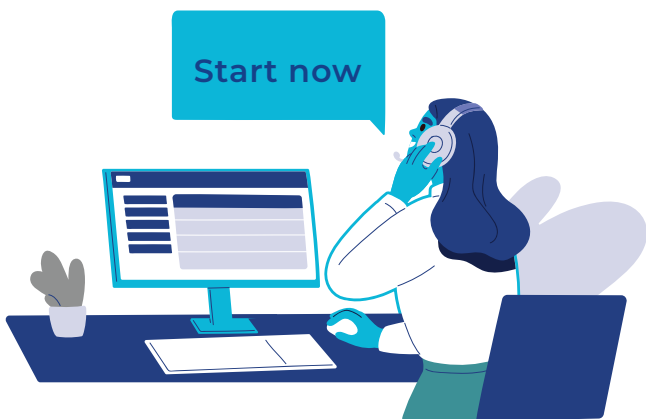


### COMMUNITY REENTRY PROGRAM

The Community Reentry Program is designed for patients released from the criminal justice system who are experiencing a gap in insurance coverage. Eligible patients may receive up to 2 doses of SUBLOCADE at no cost.

<sup>a</sup> The INSUPPORT Copay Assistance Program is valid ONLY for patients with private insurance who are prescribed SUBLOCADE for on-label use. Patients with government insurance are not eligible for the Copay Assistance Program, including, but not limited to, Medicare, Medicaid, Medigap, VA, DoD, TRICARE, CHAMPVA, or any other federally or state-funded government-assisted program. Other restrictions apply. For full Program Terms and Conditions, visit [INSUPPORT.com](https://www.insupport.com).

<sup>b</sup> Neither INSUPPORT, nor Indivior Inc., makes any warranties, expressed or implied, about the accuracy of the insurance coverage information, nor is this a guarantee of current or future coverage and/or reimbursement for any Indivior product. Patients and healthcare professionals should always verify actual coverage, coding, patient out-of-pocket costs, and reimbursement guidelines with an insurance provider on a patient-specific basis.



---

For additional information, reach out to us.

**Call:**

844-INSPPRT (844-467-7778)

Monday through Friday from 8AM–8PM ET

**Email:**

[enroll@insupport.com](mailto:enroll@insupport.com)

**Visit:**

[INSUPPORT.com](https://INSUPPORT.com)

---

For **BOXED WARNING**, refer to first page. Please see accompanying full Prescribing Information, including **BOXED WARNING** and Medication Guide, or go to **SUBLOCADEHCP.COM**.  
For REMS information, visit **SUBLOCADEREMS.com**.

**Sublocade**<sup>®</sup>  
(buprenorphine extended-release)  
injection for subcutaneous use <sup>Ⓢ</sup>  
100mg•300mg



P-BAG-US-01475 EXPIRY August 2026

© 2024 Indivior UK Limited | INDIVIOR<sup>®</sup>, SUBLOCADE<sup>®</sup> and INSUPPORT<sup>®</sup> are registered trademarks of Indivior UK Limited. | All rights reserved.