

# PATIENT JOURNEY FOR RESIDENTIAL TREATMENT CENTERS




The following resource is a guide for residential treatment centers (RTCs) to understand and appropriately navigate access for SUBLOCADE® (buprenorphine extended-release).

**WARNING: RISK OF SERIOUS HARM OR DEATH WITH INTRAVENOUS ADMINISTRATION;  
SUBLOCADE RISK EVALUATION AND MITIGATION STRATEGY**

- Serious harm or death could result if administered intravenously. SUBLOCADE forms a solid mass upon contact with body fluids and may cause occlusion, local tissue damage, and thrombo-embolic events, including life threatening pulmonary emboli, if administered intravenously.
- Because of the risk of serious harm or death that could result from intravenous self-administration, SUBLOCADE is only available through a restricted program called the SUBLOCADE REMS Program. Healthcare settings and pharmacies that order and dispense SUBLOCADE must be certified in this program and comply with the REMS requirements.

Please see accompanying full [Prescribing Information](#), including **BOXED WARNING**, and [Medication Guide](#) or go to [SUBLOCADEHCP.com](http://SUBLOCADEHCP.com).  
For REMS information, visit [www.SUBLOCADEREMS.com](http://www.SUBLOCADEREMS.com).

P-BAG-US-01379 EXPIRY September 2025

  
**Sublocade**<sup>®</sup>  
(buprenorphine extended-release)  
injection for subcutaneous use <sup>®</sup>  
100mg•300mg

## PATIENT JOURNEY FOR RTCs



### Evaluation (Intake)\* 0–2 Days

- Provider office should verify benefits with patient’s insurance OR fill out the INSUPPORT Patient Enrollment Form (PEF) to verify:
  - Insurance benefits (deductible)
  - Copay card
  - The INSUPPORT® network specialty pharmacy (SP)

Facility will receive a summary of benefits in 3 business days or less

**i** Enroll in INSUPPORT and designate a champion to manage the process



### Detox/Stabilization\* ~ 1–7 Days

- Provider will send the prescription (Rx) to the INSUPPORT network SP
- If applicable, complete the prior authorization (PA)

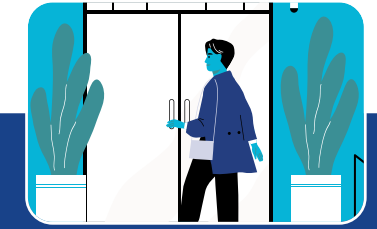
**i** To simplify the dispensing process, offices should provide the PA #, copay ID, and RX to the SP

**i** Refer to the benefit summary to determine if a PA is required. SUBLOCADE can be covered under both the medical benefit or pharmacy benefit



### Residential 7–27 Days

- Contact SP to coordinate shipment. Estimated shipping is 2 business days
- Case managers may begin post-treatment planning



### Transition of care

- Begin post-treatment planning to transition patient to a community provider. Refer to the Find a SUBLOCADE Treatment Provider (FASTP) Tool.
- Patient will be discharged
  - Fill out the SUBLOCADE Reminder Card and provide it to the patient
  - If applicable, provide patient with the copay card number
- To assist patients transitioning to a community provider, refer to the Transition of Care HCP brochure.

**i** Upon discharge, case manager or patient should contact the community provider for an initial consultation prior to the anticipated injection date

\*The SUBLOCADE authorization and acquisition process can be stopped during the Evaluation (Intake) and Detox/Stabilization steps.

For **BOXED WARNING**, refer to front page. Please see accompanying full [Prescribing Information](#), including **BOXED WARNING**, and [Medication Guide](#) or go to [SUBLOCADEHCP.com](http://SUBLOCADEHCP.com).

For REMS information, visit [www.sublocaderEMS.com](http://www.sublocaderEMS.com).

P-BAG-US-01379 EXPIRY September 2025

For additional enrollment information, please review:



**INSUPPORT® TRANSITION OF CARE HCP BROCHURE**

<https://www.insupport.com/pdf/transition-of-care-hcp-specialty-product.pdf>



**FIND A SUBLOCADE TREATMENT PROVIDER (FASTP) TOOL**

<https://www.insupport.com/findtreatment>



**BILLING AND CODING GUIDE**

<https://www.insupport.com/billing>



**SAMHSA TIP SHEET**



<https://www.insupport.com/pdf/samhsa-treatment-services-locator.pdf>

For **BOXED WARNING**, refer to front page. Please see accompanying full Prescribing Information, including **BOXED WARNING**, and Medication Guide or go to SUBLOCADEHCP.com.

For REMS information, visit [www.sublocadeREMS.com](http://www.sublocadeREMS.com).

P-BAG-US-01379 EXPIRY September 2025

© 2023 Indivior UK Limited | INDIVIOR®, SUBLOCADE®, and INSUPPORT® are registered trademarks of Indivior UK Limited | ALL RIGHTS RESERVED.

  
**Sublocade®**  
(buprenorphine extended-release)  
injection for subcutaneous use   
100mg•300mg